



WorkAloha

自分らしく、もっと自由に。



Proposal of the new normal lifestyle that is not restricted to the place of your work.



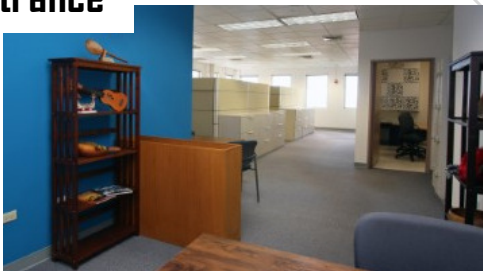
A Private Room (Oceanview)



C Private Desk (Oceanview)



Entrance



“Experience having your own office in the center of Waikiki”

We provide co-working space “WorkAloha” where you can see beautiful views of Waikiki, such as Royal Hawaiian Hotel, which is known as Pink Palace, and Diamond Head, which are the symbols of Waikiki. It can be used as the business hub in Hawaii and as a workstation office. Would you like to rent an office space in Waikiki ?



Office Rent Services at Kintetsu International Hawaii



Best Working Style

Remote work in Hawaii

POINT 1

The best location!

It is a perfect location for the workplace. It is in the heart of Waikiki and located on the 14th floor of Waikiki Business Plaza, which is within walking distance from major hotels in Waikiki.

POINT 2

Have various flexible services!

We offer spaces and prices that suit your needs and work styles. ‘From long-term to one-day use’ and ‘from private rooms to free space.’ We offer meeting rooms for business negotiations as well.

POINT 3

Available in Japanese!

If you have any problems, Japanese staffs will help you. Attendance certificate can also be prepared. Please feel free to contact us for making a free time plan. Kintetsu International Hawaii is a local subsidiary of Kinki Nippon Tourist, so you can use services with confidence.



KINTETSU INTERNATIONAL HAWAII COMPANY
A division of Kintetsu International Express (U.S.A.), Inc.
近畿日本ツーリストハワイ (米国法人)



WorkAloha Office Rent Services

Business hours: Mon-Fri (except holidays)

Usage Fee / Month

Category (Work Components)		Price Per month
A	Private Room (oceanview)	\$1,200
B	Private Room (lobby area) *image not shown below	\$1,200
C	Private Desk (oceanview)	\$600
D	Private Desk	\$600
E	Open Space	\$400

*1 day use of Private Desk and Open Space available for walk-ins

Membership Benefits

Monthly users are allowed to use services shown below.

Free use of multi-use enclosed space (up to 15 min when crowded) / Computer rental (except E) / Wi-Fi / Concierge service / Attendance confirmation (except E) / Company name plate (except E) / Locker(E only)/ Cabinet (except E. extra charge) / Printing & copy (BW: up to 10 C: up to 10 per day) / Discount for tour excursion, air ticket, package tour, etc. / Dining reservation service / Mail service (Except E) / Refreshment (water / coffee), / Meeting room (Free for up to 2 hours each week. Except E. Please refer to the Global Service site for details.)

Application Process

If you wish to apply for the office rent services, please contact us as follows.

Online: Please refer to the QR code below

Email: globalservices@kihnl.com

Phone: +1 (808) 921-0519

Please refer to the WorkAloha page on our global service site from the QR code on the right



If you contact by email, please put the following information.

- Name in English
- Email / Phone Number
- Company / Group Name (if you use by group / company)
- Preferred Plan (Choose from A-E)
- Term of Use

(Regarding A to D, we are currently outsourcing the management agency to Hawaii Commercial Real Estate LLC, and you will be contracted through them.)

WorkAloha Members

After you decide on the content of contract, you will be required to contract and register as a WorkAloha Member.

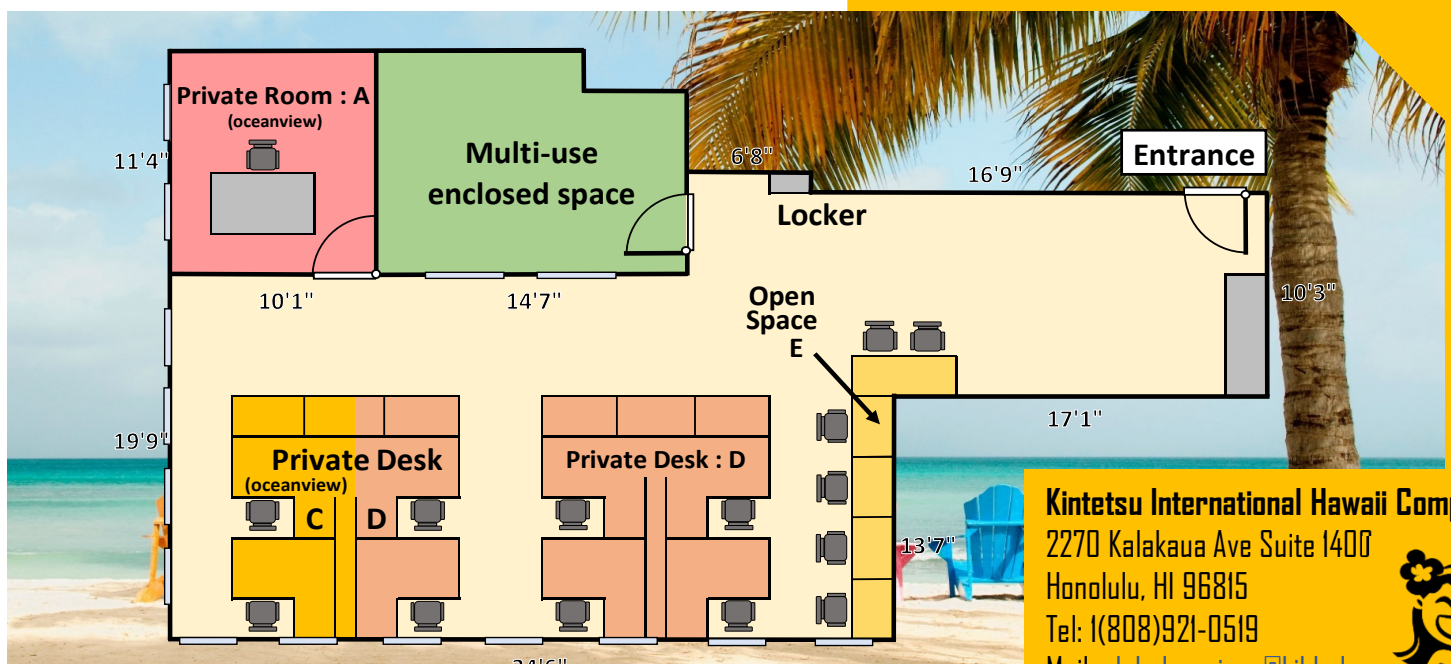
Please confirm the terms and conditions of the contract before signing the agreement.

Holiday Aloha (Holiday Aloha Members)



Kinki Nippon Tourist Group offers various services to customers traveling to Hawaii.

(Providing practical information, such as digital services and discount on local optional tours)



Kintetsu International Hawaii Company
2270 Kalakaua Ave Suite 1400
Honolulu, HI 96815
Tel: 1(808)921-0519
Mail: globalservices@kihnl.com

